

CATALOGUE

Toolboxes
Industrial cases



DIVERSITY AND QUALITY

HEPCO & BECKER

What started as a small craft business a few years ago has developed into a medium-sized company over the years. Hepco & Becker has become a recognized and reliable partner for industry, trade and craft. The extensive range of tool cases and tool bags, transport containers in different designs and materials makes Hepco & Becker one of the leading market players in Germany and abroad.

The flat corporate hierarchy enables short decision-making processes and creates a high degree of flexibility so that special requests can also be quickly realized.

Thanks to many years of cooperative partnerships, we always succeed in meeting the special product and quality requirements of our customers.

Our production takes into account recognized environmental standards and the responsible use of resources and materials. The sustainability of our products is guaranteed by the repair service and the delivery of spare parts.

You can always trust us and our products!

Take the time to look through our catalog and let yourself be surprised. You are also welcome to call or email us. We look forward to hearing from you and will be happy to answer your questions!

Sincerely, Uwe Zoller
Sales Manager



Uwe Zoller

Sales management

Tel.: 06331-1453-202

E-Mail: uwe.zoller@hepco-becker.de

FURTHER CONTACTS



Ingmar Höh

Key Account Manager

Tel.: 06331-1453-201

E-Mail: ingmar.hoeh@hepco-becker.de

Ralf Klein

Sales

Tel.: 06331-1453-204

E-Mail: ralf.klein@hepco-becker.de

Natascha Schaaf-Stephan

Sales

Tel.: 06331-1453-203

E-Mail: natascha.schaaf-stephan@hepco-becker.de

BUDGET Page 4



CLASSIC Page 8



FUTURE Page 12



ROBUST Page 14



X-PROTECT Page 16



WING Page 18



VISION Page 20



FAVORIT Page 22



EASY Page 29



CHICAGO CASE Page 30



BASIC Page 34



POLYTEX Page 36



SKYBOX Page 42



SOLID Page 44



STRONGMATE Page 48



EXAKT Page 51



TOOLPLATES Page 52



INFO

Corporate Identity Page 50

History of our company Page 56

Terms of business Page 57

Case Configurator/Webpage Page 58

Flyer Page 59

Impact-resistant ABS case

Electricians, installers and fitters across the globe are already using the BUDGET tool case. Perfect as a universal tool case with different tool plates and inserts, or as empty cases for transporting devices. In traditional tradition produced in Pirmasens tool cases convinced by its quality and above all by its price! Quality does not always have to be expensive.



- Strong ABS-shell
- Extra-large plastic-protection for the frame
- Special quality metal-locks
- Extremely strong aluminium frame
- Ergonomic handle
- Three metal-hinges
- Extra-strong lid-holders
- Some models with additional combination lock
- Modell 5045: EuroPlus Inserts in industry standard sizes -compatible with many systems
- Set can also be used for other suitcase models with dimension 460x310
- Durability-tested with 25 kg

MUCH MORE INFORMATION AND PICTURES
CONTAIN OUR INDIVIDUAL PRODUCT FLYERS, SEE PAGE 59





BUDGET 5031 Item-no. 05 5031 8019

- Bottom tray with cover plate
- Tool plate 4766

BUDGET 5041 Item-no. 05 5041 8019

- Bottom tray with cover plate
- Tool plate 4567

BUDGET 5043 Item-no. 05 5043 8019

- Bottom tray with cover plate
- Tool plate 4574
- Tool plate 5164
- Document compartment

BUDGET 5045 Item-no. 05 5045 8019

- Bottom tray with cover plate
- Boxes with compartments for bottom tray 4799
- Tool plate 4567

MM Inner dimension
460 x 160 x 310

KG Weight
4,3

Volume
23 Litres

MM Inner dimension
460 x 160 x 310

KG Weight
4,2

Volume
23 Litres

MM Inner dimension
460 x 180 x 310

KG Weight
4,6

Volume
26 Litres

MM Inner dimension
460 x 160 x 310

KG Weight
4,5

Volume
23 Litres



BUDGET 5021 Item-no. 10 5021 8019

- Bottom tray with cover plate
- Tool plate 5164
- Tool plate 4766
- Document plate

BUDGET 5022 Item-no. 10 5022 8019

- Bottom tray with cover plate
- Tool plate 5164
- Tool plate 4766
- Document plate

BUDGET 5072 Item-no. 00 5072 8019

- Bottom tray with cover plate
- Tool plate 5366
- Document plate

BUDGET 5075 Item-no. 00 5075 8019

- Bottom tray with cover plate
- Tool plate 5366
- Document plate

With removable roller system



MM Inner dimension
460 x 160 x 360

KG Weight
5,4

Volume
23 Litres

MM Inner dimension
460 x 180 x 310

KG Weight
5,5

Volume
26 Litres

MM Inner dimension
470 x 200 x 360

KG Weight
5,5

Volume
34 Litres

MM Inner dimension
470 x 220 x 360

KG Weight
7,2

Volume
37 Litres

EMPTY CASES 140 - 220mm



Item-no. 20 5075 1919
With removable roller system



BUDGET 5012 Item-no. 00 5012 8019

- Bottom tray with cover plate
- Tool plate 4766
- Document plate

MM Inner dimension 460 x 180 x 310 **KG** Weight 4,9 **Volume** 26 Litres

BUDGET 5011 Item-no. 00 5011 8019 like 5012

MM Inner dimension 460 x 160 x 310 **KG** Weight 4,8 **Volume** 23 Litres

BUDGET 5076 Item-no. 00 5076 8019

- Bottom tray with cover plate
- WING 4902
- Document plate

With removable roller system



MM Inner dimension 470 x 220 x 360 **KG** Weight 9,5 **Volume** 37 Litres

BUDGET 5010 Item-no. 20 5010 1919

MM Inner dimension 460 x 140 x 310 **KG** Weight 2,1 **Volume** 20 Litres

BUDGET 5011 Item-no. 20 5011 1919

MM Inner dimension 460 x 160 x 310 **KG** Weight 2,3 **Volume** 23 Litres

BUDGET 5012 Item-no. 20 5012 1919

MM Inner dimension 460 x 180 x 310 **KG** Weight 2,4 **Volume** 26 Litres

BUDGET 5072 Item-no. 20 5072 1919

MM Inner dimension 470 x 200 x 360 **KG** Weight 2,8 **Volume** 34 Litres

BUDGET 5075 Item-no. 20 5075 1919

MM Inner dimension 470 x 220 x 360 **KG** Weight 4,4 **Volume** 37 Litres

Crafts in style

The CLASSIC tool case traditionally made in our factory combines all the good features of a tool case for professional use. Next a deep-drawn, high-impact ABS-Pro shell, the case is also made of an extremely stable, especially hardened aluminum frame. Especially for daily continuous use, the CLASSIC tool case is the perfect companion for electricians, plumbers or their apprentices. Perfect as universal tool case with various tool boards and inserts, or as empty cases for transporting devices.



- High-quality die-cast metal locks, lockable
- Extremely stable, specially hardened aluminium frame
- Three riveted metal-hinges
- Handle and locks fixed with screws
- Extra-large plastic-protection for the frame
- Plastic feet
- Extra-strong lid-holders
- Frame and case shell multiple mechanical riveted
- Extremely strong ABS-PRO-shell
- Airworthy
- Extra-large plastic-protection
- 4 metal spacers on underside for protection the case tray against scratching
- Durability-tested with 35 kg

MUCH MORE INFORMATION AND PICTURES
CONTAIN OUR INDIVIDUAL PRODUCT FLYERS, SEE PAGE 59





140mm



160mm



180mm



240mm



CLASSIC 5110

Item-no. 00 5110 8019

CLASSIC 5111

Item-no. 00 5111 8019

CLASSIC 5112

Item-no. 00 5112 8019

CLASSIC 5113

Item-no. 00 5113 8019

- Bottom tray with cover plate
- Tool plate 4766
- Document plate

- Bottom tray with cover plate
- Tool plate 4766
- Document plate

- Bottom tray with cover plate
- Tool plate 4766
- Document plate

- Bottom tray with cover plate
- Tool plate 4766
- Document plate

MM Inner dimension
460 x 140 x 310

KG Weight
4,9

Volume
20 Litres

MM Inner dimension
460 x 160 x 310

KG Weight
5,1

Volume
23 Litres

MM Inner dimension
460 x 180 x 310

KG Weight
5,2

Volume
26 Litres

MM Inner dimension
460 x 240 x 310

KG Weight
5,9

Volume
34 Litres



CLASSIC 5121 Item-no. 10 5121 8019

- Bottom tray with cover plate
- Tool plate 5164
- Tool plate 4766
- Document plate

CLASSIC 5122 Item-no. 10 5122 8019

- Bottom tray with cover plate
- Tool plate 5164
- Tool plate 4766
- Document plate

CLASSIC 5182 Item-no. 00 5182 8019

- Bottom tray with cover plate
- Tool plate 5366
- Document plate

MM Inner dimension
460 x 160 x 360

KG Weight
6,2

Volume
23 Litres

MM Inner dimension
460 x 180 x 360

KG Weight
6,3

Volume
26 Litres

MM Inner dimension
470 x 200 x 360

KG Weight
6,2

Volume
34 Litres



EMPTY CASES 140 - 240mm



CLASSIC 5114 Item-no. 00 5114 8019

- Bottom tray with cover plate
- WING 4901
- Document plate

MM Inner dimension 460 x 180 x 310 **KG** Weight 7,7 **Volume** 26 Litres

CLASSIC 5110 Item-no. 20 5110 1919

MM Inner dimension 460 x 140 x 310 **KG** Weight 2,1 **Volume** 20 Litres

CLASSIC 5111 Item-no. 20 5111 1919

MM Inner dimension 460 x 160 x 310 **KG** Weight 2,3 **Volume** 23 Litres

CLASSIC 5113 Item-no. 20 5113 1919

MM Inner dimension 460 x 240 x 310 **KG** Weight 2,9 **Volume** 34 Litres

CLASSIC 5112 Item-no. 20 5112 1919

MM Inner dimension 460 x 180 x 310 **KG** Weight 2,4 **Volume** 26 Litres

CLASSIC 5182 Item-no. 20 5182 1919

MM Inner dimension 470 x 200 x 360 **KG** Weight 3,2 **Volume** 34 Litres

Future-oriented elegance

The FUTURE tool case from our own production impresses with its stylish surface structure, which also stabilizes the case shell.

With many trim levels similar to the CLASSIC. For special customers with a penchant for the particular.



- Extra-large plastic-protection for the frame
- High-quality die-cast metal locks, lockable
- Extremely stable, specially hardened aluminium frame
- Airworthy
- Ergonomic handle
- Handle and locks fixed with screws
- Additional Combination lock
- Extra-strong lid-holders
- Additional stability by special optic
- Extremely strong ABS-PRO-shell
- Durability-tested with 40 kg

MUCH MORE INFORMATION AND PICTURES
CONTAIN OUR INDIVIDUAL PRODUCT FLYERS, SEE PAGE 59



EMPTY CASES



FUTURE 5222 Item-no. 10 5222 8019

- Bottom tray with cover plate
- Tool plate 5164
- Tool plate 4766
- Document plate

FUTURE 5322 Item-no. 10 5322 8019

- Bottom tray with cover plate
- Tool plate 5364
- Tool plate 5366
- Document plate

FUTURE 5212 Item-no. 20 5212 1919

MM Inner dimension	KG Weight	Volume
460 x 180 x 310	2,6	26 Litres

FUTURE 5312 Item-no. 20 5312 1919

MM Inner dimension	KG Weight	Volume
470 x 200 x 360	3,1	34 Litres

MM Inner dimension	KG Weight	Volume
460 x 180 x 310	6,3	26 Litres

MM Inner dimension	KG Weight	Volume
470 x 200 x 360	6,5	34 Litres

Tough Job

37 l. Volume, high quality components, trolley function, aluminum corners. These are just some of the convincing features of the ROBUST tool case from HEPCO & BECKER. This series is for professional use. It impresses with its features, robustness and handling. Not only does the wrench find room in it, but there is also plenty of room in the bottom tray for drills or larger equipment. By lockable trolley function, the case can be moved from the assembly point to the assembly point at any time. A zinc die-cast lock, optionally with TSA lock cylinder protects the content for thieves.

The German top product.



- Ergonomic handle
- Special quality metal-locks
- Extra-strong lid holder
- Specially hardened aluminium frame
- Three riveted metal-hinges
- Ball-bearing-wheels in-walled
- Additional combination lock
- Lockable, extra-long trolley system
- Handle and locks fixed with screws
- Extremely strong HDPE-shell in soft-touch-optic
- Additional aluminum-protection for the edges of the case
- Extra-large plastic-protection for the frame
- Durability-tested with 40 kg

TOP SELLER

MUCH MORE INFORMATION AND PICTURES
CONTAIN OUR INDIVIDUAL PRODUCT FLYERS, SEE PAGE 59

Top class tool storage



EMPTY CASES



TSA locks



TSA locks



ROBUST 5765 Item-no. 00 5765 8019

- Bottom tray with cover plate
- Tool plate 5366
- Document plate

Integrated trolley-system

ROBUST 5770 Item-no. 00 5770 8019

- Bottom tray with cover plate
- Tool plate 5366
- Tool plate 5364
- Document plate

Integrated trolley-system

ROBUST 5775 Item-no. 00 5775 8019

- Bottom tray with cover plate
- Tool plate 5366
- Tool plate 5364
- Document plate

Integrated trolley-system

ROBUST 5770 Item-no. 20 5770 8019

MM Inner dimension	KG Weight	Volume
470 x 220 x 360	8,0	37 Litres

ROBUST 5775 Item-no. 20 5775 8019

MM Inner dimension	KG Weight	Volume
470 x 220 x 360	8,0	37 Litres

MM Inner dimension	KG Weight	Volume
470 x 220 x 360	7,5	37 Litres

MM Inner dimension	KG Weight	Volume
470 x 220 x 360	8,0	37 Litres

MM Inner dimension	KG Weight	Volume
470 x 220 x 360	8,0	37 Litres

Stylish with grip

Noblest components, paired with high functionality. That's what makes the X-PROTECT toolbox series. As every HEPKO & BECKER tool case MADE IN GERMANY, we have installed only the best components for the X-PROTECT. In addition to high-quality TSA metal die cast locks has the case a high-quality surface finish with a soft feel, as it is known from automotive valve construction. With the detachable trolley is the X-PROTECT the ideal everyday companion for specialists, even if the tool is too heavy.



- Special quality metal-locks with TSA
- Extra-large plastic-protection for the frame
- Three riveted metal-hinges
- Extremely strong aluminum frame
- Extra-strong lid-holders
- Handle and locks fixed with screws
- Additional Combination lock
- Ergonomic handle
- Detachable trolley
- Extremely strong ABS-X-shell
- Additional stability by special optic
- Made in Germany
- Airworthy
- New, reinforced tool plates

MUCH MORE INFORMATION AND PICTURES
CONTAIN OUR INDIVIDUAL PRODUCT FLYERS, SEE PAGE 59

Compact, stable, convertible





X-PROTECT 5712 Item-no. 00 5712 8019 **X-PROTECT 5722** Item-no. 10 5722 8019 **X-PROTECT 5732** Item-no. 10 5732 8019 **X-PROTECT 5742** Item-no. 10 5742 8019

- Bottom tray with cover plate
- Tool plate 4766
- Document plate

- Bottom tray with cover plate
- Tool plate 4766
- Tool plate 5164
- Document plate

- Bottom tray with cover plate
- Tool plate 4766
- Document plate

With removable
roller system



- Bottom tray with cover plate
- Tool plate 4766
- Tool plate 5164
- Document plate

With removable
roller system



MM Inner dimension 460 x 180 x 310 **KG** Weight 5,2

Volume 26 Litres

MM Inner dimension 460 x 180 x 310 **KG** Weight 5,8

Volume 26 Litres

MM Inner dimension 460 x 180 x 310 **KG** Weight 6,9

Volume 26 Litres

MM Inner dimension 460 x 180 x 310 **KG** Weight 7,5

Volume 26 Litres

Easy to take away

Foldable tool boards with carrying handle for holding tools of all kinds for different purposes. The wings can be used alone, for insertion or installation in some of our suitcase models. Due to their nature and the good clarity, a quick access to the tools is guaranteed. The wings are made of PP plates. These are doubled and riveted with metal hinges. On the boards are sewn over 40 bags in different sizes of plastic fabric. At the edges of the boards are edged with a sturdy plastic band.



- Quick release with latch
- Metal hinges and practical layout with more than 40 compartments on 6 pages
- Riveted carrying strap



- Can be used in different models of toll boxes
- Also available as set with matching case:
SOLID 5615 / WING 4901 SET
CLASSIC 5114 / WING 4901 SET
BUDGET 5076 / WING 4902 SET

MUCH MORE INFORMATION AND PICTURES
CONTAIN OUR INDIVIDUAL PRODUCT FLYERS, SEE PAGE 59





WING 4901 Item-no. 30 4901 8019

The model WING 4901 equipped with 45 plug-in options can be filled with tools and used directly. With an inner depth of 74mm, even tools with a wide grip can be easily used. It is also possible this special panel in a suitcase model z. B. 00 5610 8019, or insert a box. This makes this WING a true all-rounder in tool storage. Use the transport system when working on the construction site or in the workshop. Flexible and fast access to the right tool. Just take your small workshop to every job site.

WING 4902 Item-no. 30 4902 8019

The model WING 4902 equipped with 58 plug-in options can be filled with tools and used directly. With an inner depth of 74mm, even tools with a wide grip can be easily used. It is also possible this special panel in a suitcase model z. B. 00 5620 8019, or insert a box. This makes this WING a true all-rounder in tool storage. Use the transport system when working on the construction site or in the workshop. Flexible and fast access to the right tool. Just take your small workshop to every job site.

The future with structure

The VISION is an innovative, robust service and assembly case with an attractive design. The aluminum frame with sturdy plastic corners additionally stiffens the impact-resistant polycarbonate case. An easy-to-use one-handed central closure, a special lid brake, easy-to-remove tool plates, and a foam-equipped cover for the sorting boxes in the bottom are features that make every worker's job easier. The VISION withstands payloads of up to 35 kg. The sorting boxes and grid dividers can be varied and adapted to your own wishes. The 4-way adjustable trolley, which is equipped with three extra storage compartments and two ball-bearing, smooth-running wheels, is removable and can easily be retrofitted to the VISION 2101 model.



- Tool boards can be removed individually
 - The tool plates have brush holders on the front and textile pockets on the back for tools
 - One-hand lever central lock with individually adjustable combination lock locking the bottom cover panel
 - 10 matching sorting boxes in 4 different sizes can be exchanged with each other.
- In the other half freely selectable dividers made of plastic lattices.

MUCH MORE INFORMATION AND PICTURES
CONTAIN OUR INDIVIDUAL PRODUCT FLYERS, SEE PAGE 59

Premium Class tool cases





The trolley drive unit 00 2120 8019 can be retrofitted on the Vision 2101 and offers additional storage compartments.



Vision 2100 Item-no. 00 2100 8019

Two tool plates, both with brush holders on the front and textile loops on the back, offer a variety of tool attachment options and can be easily changed or removed. The foam-equipped cover plate can be opened with the associated lever and fixed to the attached rubber for the small parts removal tool plate from the insert boxes. 10 sorting boxes coordinated in the bottom part in 4 different sizes 6 pieces (red) 48 x 48 x 60 mm, 2 pieces (yellow) 48 x 100 x 60 mm, 1 piece (blue) 100 x 100 x 60 mm, 1 piece (green) 100 x 155 x 60 mm, can be variably interchanged. In the other half freely selectable dividers made of plastic lattices. Detachable trolley version with three additional storage compartments and ball-bearing wheels.

MM Inner dimension
435 x 270 x 230

KG Weight
8,7

Volume
26 Litres

Vision 2101 Item-no. 00 2101 8019

Two tool plates, both with brush holders on the front and textile loops on the back, offer a variety of tool attachment options and can be easily changed or removed. The foam-equipped cover plate can be opened with the associated lever and fixed to the attached rubber on the small parts removal tool plate from the insert boxes. 10 sorting boxes coordinated in the bottom part in 4 different sizes 6 pieces (red) 48 x 48 x 60 mm, 2 pieces (yellow) 48 x 100 x 60 mm, 1 piece (blue) 100 x 100 x 60 mm, 1 piece (green) 100 x 155 x 60 mm, can be variably interchanged. In the other half freely selectable dividers made of plastic lattices.

MM Inner dimension
435 x 270 x 185

KG Weight
6,2

Volume
22 Litres

Sturdy and hard-wearing

FAVORIT are the already multiple times proven tool bags made of leather or leather in combination with ABS or coated hard paper board. The series impresses with its diverse selection of products. Removable walls, hinged side panels, variable tool holders are just a few features of these bags, which are crafted in careful, traditional, handcrafted. Many bags have side hooks to which a shoulder belt can be attached. The products are equipped with quality locks and high-quality fittings. The ergonomic carrying handles complete this series.



- In the tradition of craftsmanship made in our German manufacture
- High-quality material and fittings
- Big product variety
- Ergonomic handle
- High-quality locks
- Close to nature
- Models with sturdy sheet steel floor pan and circumferential aluminium edge angles
- Models with ABS side panels
- Adjustable tool holders

MUCH MORE INFORMATION AND PICTURES
CONTAIN OUR INDIVIDUAL PRODUCT FLYERS, SEE PAGE 59

Traditionally handcrafted in Germany





FAVORIT 9117 Item-no. 50 9117 8019

Removable central wall, semi-fold out front and rear wall, 8 Fixed loops on the front and 9 on the rear wall as well as on both sides of the central wall, coated aluminium profiles for edge reinforcement, surrounding leather strap, galvanized steel bottom tray, two extra-large locks with keys

FAVORIT 7123 Item-no. 50 7123 8019 black

Item-no. 50 7123 1920 red
Central wall, large front bag, semi-fold out front and rear wall, 8 push-in compartments on the front wall, 9 adjustable loops on the front of the central wall, 8 push-in compartments on the rear wall and 8 Fixed loops on the side-walls (4 each), aluminium edge reinforcement, galvanized steel bottom tray, carrier rings.

FAVORIT 7121 Item-no. 50 7121 8019

Removable central wall, semi-fold out front and rear wall, two surrounding leather straps, 18 adjustable loops on the front and on the rear wall (9 each), 16 push-in compartments on the central wall, aluminum edge reinforcement, galvanized steel bottom tray, one lock with key, carrier rings

FAVORIT 7122 Item-no. 50 7122 8019

Removable central wall with 8 adjustable loops on the front side and a document compartment on the back side, 2 zippers at fold out front wall with 4 push-in compartments, 1 push button pocket and a little document compartment, rear wall with 18 adjustable loops, galvanized steel bottom tray, carrier rings, aluminium edge reinforcement, two locks with keys

MM Inner dimension
450 x 190 x 340

KG Weight
5,0

Volume
29 Litres

MM Inner dimension
450 x 190 x 340

KG Weight
5,0

Volume
29 Litres

MM Inner dimension
420 x 170 x 320

KG Weight
4,1

Volume
23 Litres

MM Inner dimension
400 x 145 x 280

KG Weight
3,3

Volume
16 Litres



FAVORIT 7120 Item-no. 50 7120 8019

Removable central wall with 27 adjustable loops, fold out front wall with 8 push-in compartments, rear wall with 6 push-in compartments, 1 push button pocket and a little document compartment, galvanized steel bottom tray, carrier rings, aluminium edge reinforcement, two locks with keys

FAVORIT 7126 Item-no. 50 7126 8019

Fold out front wall, 18 adjustable loops, 8 fixed loops on the left and the right side (4 each), galvanized steel bottom tray, carrier rings, aluminium edge reinforcement, two locks with keys

FAVORIT 7163 Item-no. 50 7163 8019 black

Item-no. 50 7163 1920 red

Front bag, fold out front wall, 18 adjustable loops on front and rear wall (9 each), Fixed loops on the left and the right side (1 each), carrier rings, aluminium edge reinforcement, two locks with keys

FAVORIT 7125 Item-no. 50 7125 8019

2 elastic bands to fix spirit level, aluminium edge reinforcement, surrounding leather-strap, galvanized steel bottom tray, two locks with keys

Suitable for large pliers up to 60cm

MM Inner dimension
420 x 150 x 250

KG Weight
3,5

Volume
16 Litres

MM Inner dimension
470 x 160 x 310

KG Weight
3,4

Volume
23 Litres

MM Inner dimension
420 x 150 x 250

KG Weight
2,8

Volume
18 Litres

MM Inner dimension
610 x 160 x 220

KG Weight
3,4

Volume
21 Litres



FAVORIT 7164 Item-no. 50 7164 8019

Fold out front wall, 18 adjustable loops on the front and rear wall (9 each), aluminium edge reinforcement, two locks with keys

FAVORIT 7124 Item-no. 50 7124 8019

Semi-fold out front wall, 18 adjustable loops on the front and rear pallet (9 each), 3 fixed loops on the left and one on the right side, two locks with keys, carrier rings

FAVORIT 7355 Item-no. 50 7355 8019

Removable central wall, semi-fold out front and rear wall, 8 fixed loops on the front and 9 on the rear wall as well as on both sides of central wall, surrounding leather strap, two extra-large locks with keys

FAVORIT 9116 Item-no. 50 9116 8019

Semi-fold out front and rear wall with 10 push-in compartments on the front wall and 10 on the rear wall, removable central wall with 16 fixed loops (8 on each side), two extra-large locks with keys

MM Inner dimension
395 x 120 x 260

KG Weight
1,9

Volume
12 Litres

MM Inner dimension
400 x 150 x 250

KG Weight
2,3

Volume
15 Litres

MM Inner dimension
450 x 190 x 340

KG Weight
4,0

Volume
29 Litres

MM Inner dimension
400 x 180 x 310

KG Weight
2,8

Volume
22 Litres



FAVORIT 7352 Item-no. 50 7352 8019

Semi-fold out front wall with 10 push-in compartments, 9 fixed loops on the rear wall and 8 fixed loops on the left and on the right side (4 each), two locks with keys

FAVORIT 7351 Item-no. 50 7351 8019

Semi-fold out front wall, 18 adjustable loops on the front and rear wall (9 each), 2 Fixed loops on the left and on the right side (one each), two locks with keys

FAVORIT 7220 Item-no. 50 7220 8019

Two locks
Without interior fittings

FAVORIT 7127 Item-no. 50 7127 8019

Rear wall with 9 adjustable loops,
2 large front bags, carrier rings,
two buckle straps

MM Inner dimension
400 x 180 x 310

KG Weight
2,4

Volume
22 Litres

MM Inner dimension
420 x 150 x 250

KG Weight
1,8

Volume
16 Litres

MM Inner dimension
355 x 115 x 175

KG Weight
0,9

Volume
7 Litres

MM Inner dimension
390 x 120 x 260

KG Weight
2,0

Volume
12 Litres



FAVORIT 7118 Item-no. 50 7118 8019

8 adjustable loops on the front and rear pallet (4 each), carrier rings, carrier strap, one lock with key

FAVORIT 7199 Item-no. 50 7199 8019

9 adjustable loops on the rear wall, carrier rings, two locks

FAVORIT 7197 Item-no. 50 7197 8019

9 adjustable tool holders
Carrying rings, 1 socket lock



Inner dimension
410 x 160 x 300



Weight
2,0



Volume
20 Litres

FAVORIT 7190 Item-no. 50 7190 8019

Empty inside for individual use
2 plug locks

FAVORIT 7193 Item-no. 50 7193 8019

8 adjustable tool holders
carrying rings, buckle straps



Inner dimension
210 x 140 x 280



Weight
1,3



Volume
8 Litres



Inner dimension
430 x 170 x 210



Weight
2,0



Volume
15 Litres



Inner dimension
370 x 110 x 250



Weight
1,5



Volume
10 Litres



Inner dimension
340 x 110 x 170



Weight
0,9



Volume
6 Litres



FAVORIT 7130 Item-no. 50 7130 8019

Hard cardboard bag

Semi-fold out front wall, two fixed dividers in the interior, 8 Fixed loops on the front of the central wall, two locks

FAVORIT 6002 Item-no. 50 6002 8019

Hard cardboard bags

Completely empty inside; 2 socket locks

MM Inner dimension
420 x 95 x 180

KG Weight
0,6

Volume
7 Litres

FAVORIT 6001 Item-no. 50 6001 8019

FAVORIT 9161 Item-no. 50 9161 8019

Artificial leather folder

Hinged central wall with 16 fixed loops and a push button pocket for small parts, front wall with 14 push-in compartments and 4 elastic bands, bottom with 4 elastic bands, rear wall with 12 push-in-compartments, 2 locks with keys

FAVORIT 7129 Item-no. 50 7129 8019

Artificial leather folder

10 push-in compartments on the front wall, 3 elastic bands, and 7 push-in compartments on the rear wall, completely hinged, large lock with key

MM Inner dimension
400 x 150 x 210

KG Weight
1,4

Volume
13 Litres

MM Inner dimension
480 x 140 x 250

KG Weight
0,9

Volume
17 Litres

MM Inner dimension
450 x 75 x 305

KG Weight
2,2

Volume
10 Litres

MM Inner dimension
320 x 75 x 305

KG Weight
0,9

Volume
7 Litres

The EASY roll-up bags enjoy great popularity.
Fast and easy transport of tools in different compartments.



Item-no. 50 7005 1999

5 compartments

Dimensions
250 x 300

Weight
0,2

Item-no. 50 7010 1999

10 compartments

Dimensions
500 x 330

Weight
0,3

Item-no. 50 7015 1999

15 compartments
- higher version

Dimensions
680 x 330

Weight
0,4

Item-no. 50 7008 1999

8 compartments

Dimensions
400 x 300

Weight
0,2

Item-no. 50 7012 1999

12 compartments
- higher version

Dimensions
540 x 330

Weight
0,3

Item-no. 50 7020 1999

20 compartments
- higher version

Dimensions
800 x 330

Weight
0,5

Extremely strong

A must for every professional user. The CHICAGO CASE series. It combines all the features of a modern tool case such as storage space, functionality and robustness.

Whether as a universally applicable tool case, or as empty cases with foam insert for transporting heavy devices. The CHICAGO CASE adapts perfectly to any task. All CHICAGO CASE products come standard with Trolley and foldable handles. Made in the US cases are made of extremely stable and shatter proofed HDPE material manufactured and provide by their surface texture with cross grooves best stability in extreme situations. Even the U.S. Army uses these cases for transporting.



- Automatically foldable handles
- Protection-bumpers protect handle, locks during crashes
- Stiffen design
- Frame multiple riveted
- Piano-hinge over the complete back side
- Lockable, extra-long trolley system
- Ball-bearing-wheels, in-walled
- Durability-tested with 45 kg
- Extremely strong and powder coated aluminium-frame
- Construction using
- Individually usable storage space in the bottom shell
- Suitable for frequent travellers
- Different sizes
- Combination-lock and additional area for padlock
- Special quality TSA metal-locks

MUCH MORE INFORMATION AND PICTURES
CONTAIN OUR INDIVIDUAL PRODUCT FLYERS, SEE PAGE 59

Military style - Made in USA





CHICAGO CASE 5510 Item-no. 00 5510 8019

- Large storage space
- Cover plate with tool-compartments 5268
- Tool plate 5267

Integrated trolley-system
TSA locks

CHICAGO CASE 5530 Item-no. 00 5530 8019

- Large storage space
- Cover plate with tool-compartments 5368
- Tool plate 5366
- Tool plate 5364

Integrated trolley-system
TSA locks

CHICAGO CASE 5535 Item-no. 00 5535 8019

- Large storage space
- Cover plate with tool-compartments 5395
- Tool plate 5394

Integrated trolley-system
TSA locks

MM Inner dimension
530 x 240 x 310

KG Weight
7,0

Volume
39 Litres

MM Inner dimension
460 x 310 x 370

KG Weight
8,0

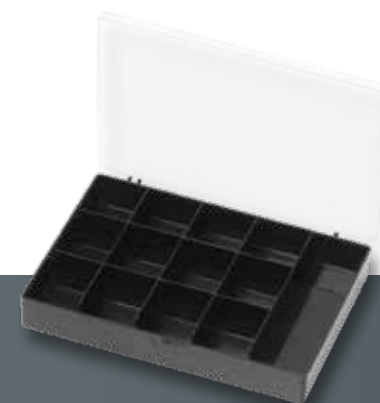
Volume
53 Litres

MM Inner dimension
485 x 321 x 485

KG Weight
8,0

Volume
73 Litres

ACCESSORIES



CHICAGO CASE 5540 Item-no. 00 5540 8019

- Large storage space
- Cover plate with tool-compartments 5391
- Tool plate 5390

Integrated trolley-system
TSA locks

CHICAGO CASE 5545 Item-no. 00 5545 8019

- Large storage space
- Cover plate with tool-compartments 5393
- Tool plate 5392

Integrated trolley-system
TSA locks

Item-no. 00 5590 8019

TSA-Padlock for all CHICAGO-CASE-Cases

Item-no. 00 5590 8000

TSA-Padlock for all Chicago-Case-Cases with flexible plastic coated wire hanger

Item-no. 00 5591 8019

Box for small parts like screws etc. 170 x 30 x 115mm

MM Inner dimension
630 x 310 x 370

KG Weight
8,5

Volume
72 Litres

MM Inner dimension
805 x 310 x 370

KG Weight
10,3

Volume
92 Litres

EMPTY CASES

Transport case for:
Drones, measuring device, spare parts, electronic equipment, etc.



Bottom area filled with cube-foam
Easy dissolution of the foam cubes
for fixing sensitive parts such as.
Measuring devices or machines



Milling foam inserts
on request



CHICAGO CASE 5550

Item-no. 00 5550 8019

Bottom area:
Filled with cube-foam for individual adaptation

Lid:
Filled with nap-foam to fix instruments

Integrated trolley-system
Butterfly metal locks

CHICAGO CASE 5551

Item-no. 00 5551 8019

Bottom area:
Filled with cube-foam for individual adaptation

Lid:
Filled with nap-foam to fix instruments

Integrated trolley-system
Butterfly metal locks

CHICAGO CASE 5552

Item-no. 00 5552 8019

Bottom area:
Filled with cube-foam for individual adaptation

Lid:
Filled with nap-foam to fix instruments

Integrated trolley-system
Butterfly metal locks

CHICAGO CASE 5553

Item-no. 00 5553 8019

Bottom area:
Filled with cube-foam for individual adaptation

Lid:
Filled with nap-foam to fix instruments

Integrated trolley-system
Butterfly metal locks

MM Inner dimension
460 x 310 x 370

KG Weight
6,5

Volume
53 Litres

MM Inner dimension
580 x 370 x 450

KG Weight
9,5

Volume
97 Litres

MM Inner dimension
710 x 410 x 560

KG Weight
12,5

Volume
163 Litres

MM Inner dimension
710 x 550 x 560

KG Weight
15,0

Volume
219 Litres

Good and convenient

With the BASIC tool case you have high quality for a small price. A low-priced suitcase, which is manufactured with high quality and in the user area leaves nothing to be desired. Especially for trainees as a starter model for budding professionals. Here the BASIC series offers the perfect companion for the professional beginning. Even hobby craftsmen use the features of the BASIC tool case safely and space-saving in the basement, Garage or the in-house workshop to stow.



- Impact-resistant ABS material
- Two high-quality tilting cylinder metal locks
- Additional Combination lock
- Strong aluminium frame
- Extra-large plastic-protection for the frame
- Plastic feet, screwed
- Three metal-hinges
- Recess in case shell for shield for personalization/individualization
- Durability-tested with 20 kg
- Ergonomic handle
- Support rings

All models with carrying strap

MUCH MORE INFORMATION AND PICTURES
CONTAIN OUR INDIVIDUAL PRODUCT FLYERS, SEE PAGE 59

The BASIC tool case for beginners!





BASIC 5910 Item-no. 00 5910 8019

- ABS-Bottom tray incl. Cover plate with Push-in compartments
- Tool plate 5891
- Document compartment 5890

BASIC 5920 Item-no. 00 5920 8019

- ABS-Bottom tray incl. Cover plate with Push-in compartments
- Tool plate 5894
- Document compartment 5893

Incl. Combination lock

BASIC 5970 Item-no. 00 5970 8019

- ABS-Bottom tray incl. Cover plate with Push-in compartments
- Tool plate 5894
- Document compartment 5893

Integrated trolley-system
Incl. Combination lock

MM Inner dimension
460 x 180 x 310

KG Weight
5,5

Volume
26 Litres

MM Inner dimension
470 x 200 x 360

KG Weight
6,5

Volume
34 Litres

MM Inner dimension
470 x 220 x 360

KG Weight
7,6

Volume
37 Litres

Our lightweights

The POLYTEX series is made of highly tear-resistant 1680D nylon. The items are lightweight, flexible and suitable for rough use on construction sites, in the industrial sector and in service. The series is equipped with pockets and compartments, holders and rubber loops that can hold many tools and equipment. In addition, most have not only a carrying handle, but also a carrying strap. POLYTEX is versatile for every craftsman, for technical service technicians and technicians. The bags are successfully tested in continuous use with 15kg load capacity.



- Heavy-duty synthetic texture
- Various applications
- Modern design
- Strong zippers known from the trekking-sector
- Extremely low weight
- Durability-tested with 15 kg

MUCH MORE INFORMATION AND PICTURES
CONTAIN OUR INDIVIDUAL PRODUCT FLYERS, SEE PAGE 59

Robust and hard-wearing





POLYTEX 5853 Item-no. 00 5853 8019

Big universal-tool-bag

Outside 9 compartments and 8 loops

Inside 12 compartments, with zipper totally closable, upper handle, shoulder belt

POLYTEX 5854 Item-no. 00 5854 8019

Small universal-tool-bag

Outside 12 compartments,

Inside 10 compartments, with zipper totally closable, Upper handle, shoulder belt

POLYTEX 5857 Item-no. 00 5857 8019

Professional tool-bag

Metal handle with rubber part, bag completely closable, with handle-mould, Flexible shoulder-belt, strong plastic feet, exterior, 6 big velcro-closing compartments, 2 big Velcro for fastening of spirit-level

Interior: 18 small compartments, 13 medium-size compartments 5 big compartments

MM Inner dimension
440 x 320 x 230

KG Weight
2,0

Volume
32 Litres

MM Inner dimension
340 x 260 x 195

KG Weight
1,5

Volume
17 Litres

MM Inner dimension
620 x 290 x 310

KG Weight
3,2

Volume
56 Litres



POLYTEX 5858 Item-no. 00 5858 8019

Small professional tool-bag

Metal handle with rubber part, bag completely closable, with handle-recess, shoulder-belt, strong plastic feet

Interior:

Outside 1 big compartment and 4 medium-size, 2 with boxes for small parts, 2 velcro for spirit-level

Inside 18 compartments: 1 big, 9 medium-size and 8 small

POLYTEX 5850 Item-no. 00 5850 8019

Technician-tool-backpack

Outside large slip pocket, small slip pocket with fixation. 2 front pockets, lower front pocket with zipper, 2 large & 4 small slip pockets, reflective tape 45x 300 mm, upper front pocket with zipper. Inside: Padded slip-in compartment for laptop, approx. 320 x 270 mm, 2 removable tool plates with a total of 8 slip-in pockets, 20 rubber band loops, 8 slip-in pockets, 7 large slip-in pockets & 1 small parts pocket.

POLYTEX 5855 Item-no. 00 5855 8019

Multi-tool-organizer

Interior: five times divided, 4 additional compartments inside, 4 rubber-loops, Outside 14 big compartments, 4 small compartment, fastening for measurement-tool, spring-hook, in the bottom additional zipper-compartment with box for small articles, Upper handle, shoulder-belt

MM Inner dimension
400 x 200 x 240

KG Weight
3,2

Volume
19 Litres

MM Inner dimension
420 x 350 x 210

KG Weight
2,5

Volume
31 Litres

MM Inner dimension
220 x 220 x 470

KG Weight
1,4

Volume
23 Litres



It's that easy:
Put the bag in the bucket and fold it
over on both sides. Finished.



POLYTEX 5860 Item-no. 00 5860 8019

Bucket bag

29 outer pockets and 14 inner pockets for holding tools of all kinds. 1 hammer loop, 1 closed cell phone pocket.

POLYTEX 5856 Item-no. 00 5856 8019

Universal tool-belt

Hard-wearing belt, two side-bags with all together 10 small compartments,
2 nail-compartments, main compartments 5-times divided,
2 hammer-holders, fastening for measurement tool

MM Inner dimension
550 x 470 x 30

KG Weight
0,8

Volume
10-15 Litres

MM Inner dimension
1250 x 250 x 30

KG Weight
0,6



POLYTEX 5863 Item-no. 00 5863 8019

Apprentice-bag

2 metal locks, fold out front wall, galvanized steel bottom tray, Ergonomic handle, carrier rings, incl. of shoulder-belt
6 Compartments on the rear wall, 10 rubber loops on the front wall, 2 Compartments on the sidewalls

POLYTEX 5851 Item-no. 00 5851 8019

Small technician-combination bag

Document-compartment with zipper Interior: Big compartment for Laptop and documents, totally
8 big tool compartments, 1 appliance-compartment with Velcro, 8 small tool compartments
Upper handle, shoulder belt

POLYTEX 5852 Item-no. 00 5852 8019

Big technician-combination bag

Two big velcro-compartments on the sides, two big 90°-opening compartments, in the First one document compartment, 17 compartments for tools and appliances, 1 small bag, in the second one, 4 big compartments, 28 rubber loops, separate main compartment for laptop and documents with removable middle-wall, Upper handle, shoulder belt, compartments for business-cards

MM Inner dimension
420 x 150 x 250

KG Weight
3,2

Volume
16 Litres

MM Inner dimension
390 x 300 x 100

KG Weight
1,1

Volume
12 Litres

MM Inner dimension
440 x 330 x 220

KG Weight
3,5

Volume
32 Litres

ZIPPER WALLET



Whether alone or in combination with a Tool case the zipper folders are ideal for a small tool set. With the zipper the folder can be completely closed.



POLYTEX 5800

Item-no. 00 5800 8019

17 push-in compartments, 1 DIN-A4 compartment for documents, 1 compartment with clear plastic folder 1 push button pocket

POLYTEX 5803

Item-no. 00 5803 8019

9 Push-in compartments 10 Elastic bands

POLYTEX 5805

Item-no. 00 5805 8019

7 push-in compartments, 31 elastic bands 1 compartment with clear plastic folder 1 push button pocket

POLYTEX 5807

Item-no. 00 5807 8019

13 push-in compartments 6 big push-in compartments 1 document compartment

MM Inner dimension
330 x 220 x 45

KG Weight
0,5

MM Inner dimension
370 x 260 x 50

KG Weight
0,6

MM Inner dimension
345 x 255 x 45

KG Weight
0,6

MM Inner dimension
425 x 310 x 60

KG Weight
0,8

The perfect organizer

The basic idea of the stacking containers is that the individual containers can be connected to each other, in order to ensure easy transport together with the base plate on rollers. The connection of the container arises without any effort in the simple placement on each other. Due to the side snap fasteners, the containers are just as easy to separate again. The containers are offered in 3 sizes and as a complete set. Four different inserts with different sized compartments for tools or small parts or a cube foam filling are available for the assembly.



- Stackable, easily locked or loosened
- Opens on pull or push
- Extreme robust, impact-resistant polypropylene
- Temperature resistant from -33 ° to + 90 ° c
- Tested in PROFI continuous use up to 60 kg
- Large carrying handle, foldable
- Smooth locks
- Device for padlock
- Stackable and lockable

Ideal as

- Machine case for power tools
- Storage box for tools and accessories
- Splash proof

Skybox 1070

Item-no. 00 1070 8019

Scope of delivery:

- 1x Skybox S
- 1x Skybox M
- 1x Skybox XL
- 1x Platform

Matching foam inserts sold separately
Matching assortment sold separately

MUCH MORE INFORMATION AND PICTURES
CONTAIN OUR INDIVIDUAL PRODUCT FLYERS, SEE PAGE 59

The perfect organizer for every workshop





PU cube foam insert Item-no. 53 6206 1919



ACCESSORIES Assortment use 5 Item-no. 00 1066 8019



Assortment use 10 Item-no. 00 1067 8019



Assortment use 18 Item-no. 00 1068 8019



Assortment use uni Item-no. 00 1069 8019



Skybox 1060 Item-no. 00 1060 8019

Box including foam insert in the lid

Matching foam inserts made of cube foam and assortment inserts sold separately

Skybox 1061 Item-no. 00 1061 8019

Box including foam insert in the lid

Matching foam inserts made of cube foam and assortment inserts sold separately

Skybox 1062 Item-no. 00 1062 8019

Box including foam insert in the lid

Matching foam inserts made of cube foam and assortment inserts sold separately

Sheet steel platform Item-no. 00 1065 8019

4 wheels, 2 of them steerable and with brake
464 x 335 mm
Weight: 3,2 kg



MM Inner dimension
400 x 300 x 80

KG Weight
2,15

Volume
10 Litres

MM Inner dimension
400 x 300 x 150

KG Weight
2,7

Volume
18 Litres

MM Inner dimension
400 x 300 x 312

KG Weight
3,2

Volume
37 Litres

Simply solid

Whether as empty cases with foam insert for transporting sensitive measuring devices, or as a tool case for safe storage of your tool repertoire. The SOLID case series delivers what it promises. A cheap, waterproof and shatterproof suitcase with an appealing design. Super suitable for outdoor use. Should it be a bit more robust, the polypropylene suitcase absorbs shocks - even a fall in baggage handling at the airport, for our SOLID suitcase is it no problem!



- Stable, robust surface
- Device for padlocks
- Stackable, also for transport models
- Version as transport case for drones, measuring instruments, sporting arms
- Absolutely watertight, dust proof and airtight (IP-67) incl. pressure compensation valve
- Ergonomic handle
- Partially with labeling field
- Temperature resistant from -33 to + 90 C
- Polypropylene material
- Airworthy and shatterproof
- Models with cube-foam in the bottom tray
- Individual adaptation to measuring instruments / tools

MUCH MORE INFORMATION AND PICTURES
CONTAIN OUR INDIVIDUAL PRODUCT FLYERS, SEE PAGE 59

Rugged waterproof construction





SOLID 5625 Item-no. 00 5625 8019

- Cover plate 5622
- Document plate 5621
- Bottom area totally filled with cube-foam for individual adaptation

SOLID 5635 Item-no. 00 5635 8019

- Cover plate 5631
- Document plate 5632
- Bottom area totally filled with cube-foam for individual adaptation

SOLID 5645 Item-no. 00 5645 8019

- Cover plate 5641
- Document plate 5642
- Bottom area totally filled with cube-foam for individual adaptation

MM Inner dimension
500 x 350 x 200

KG Weight
5,7

Volume
35 Litres

MM Inner dimension
445 x 345 x 125

KG Weight
4,5

Volume
19 Litres

MM Inner dimension
480 x 370 x 205

KG Weight
6,1

Volume
36 Litres



SET incl. WING 4901



SOLID 5615 Item-no. 00 5615 8019

Lid filled with nap-foam to fix instruments

Removable wing as tool carrier

Bottom area totally filled with cube-foam for individual adaptation

SOLID 5610 Item-no. 00 5610 8019

Lid filled with nap-foam to fix instruments

Bottom area totally filled with cube-foam for individual adaptation

SOLID 5620 Item-no. 00 5620 8019

Lid filled with nap-foam to fix instruments

Bottom area totally filled with cube-foam for individual adaptation

MM Inner dimension
425 x 290 x 150

KG Weight
5,5

Volume
18 Litres

MM Inner dimension
425 x 290 x 150

KG Weight
3,2

Volume
18 Litres

MM Inner dimension
500 x 350 x 200

KG Weight
5,0

Volume
35 Litres



SOLID 5650 Item-no. 00 5650 8019

Lid filled with nap-foam to fix instruments

Bottom area totally filled with cube-foam for individual adaptation

With address name tag
Integrated trolley-system

SOLID 5651 Item-no. 00 5651 8019

Lid filled with nap-foam to fix instruments

Bottom area totally filled with cube-foam for individual adaptation

With address name tag
Integrated trolley-system

SOLID 5653 Item-no. 00 5653 8019

Lid filled with nap-foam to fix instruments

Bottom area totally filled with cube-foam for individual adaptation

With address name tag
Integrated trolley-system

MM Inner dimension
580 x 440 x 220

KG Weight
9,5

Volume
56 Litres

MM Inner dimension
510 x 380 x 225

KG Weight
8,5

Volume
44 Litres

MM Inner dimension
510 x 290 x 180

KG Weight
7,2

Volume
27 Litres

Space for big things

The new Strongmate product family means: great design and high-quality equipment, combined with a high load capacity. Strongmate guarantees comfort and protection during storage and transportation of heavy and large professional tools and technical equipment. Strong and professional wheels, locks, handles and other components, perfectly integrated, ensure comfort and safety during use. Strongmate boxes are firmly stackable on the surface due to the special structure.



- Stackable robust and highly resilient
- Stack transport box with trolley function
- High quality carrying handles
- Butterfly locks and transport handles
- Cover seal for self-assembly
- Equipment with partition wall system possible
- Equipped with lashing eyes on the outside
- Drill holes for internal mounting kit
- Wide range of accessories available
- Other colours available on request



MUCH MORE INFORMATION AND PICTURES
CONTAIN OUR INDIVIDUAL PRODUCT FLYERS, SEE PAGE 59

Perfect for heavy and large tools





ACCESSORIES

On demand:
Equipment with
partition system



Fastening kit outside



Fastening kit inside



Strongmate 2001 Item-no. 00 2001 8019

Large storage space
Integrated trolley-system

MM	Inner dimension	KG	Weight	Volume
	910 x 300 x 370		14,5	100 Litres

Strongmate 2000 Item-no. 00 2000 8019

Outside like 2001, but single-shell

MM	Inner dimension	KG	Weight	Volume
	930 x 340 x 400		13	123 Litres

Strongmate 2002 Item-no. 00 2002 8019

Large storage space
Integrated trolley-system

MM	Inner dimension	KG	Weight	Volume
	790 x 490 x 220		13,5	83 Litres

Strongmate 2003 Item-no. 00 2003 8019

Large storage space
Integrated trolley-system

MM	Inner dimension	KG	Weight	Volume
	790 x 490 x 350		15,5	131 Litres

Bags and cases according your demands

We produce cases according your demands:
style, colour, interior



Company-colour, logo, size and equipment adapted to your requirements

Logo embossed in ABS-shell

ABS-toolcase in company color

Logo as a sticker protected by a frame

Alu-frame-case

CNC-milled foam produced according your demands

Logo embossed in leather tool bags

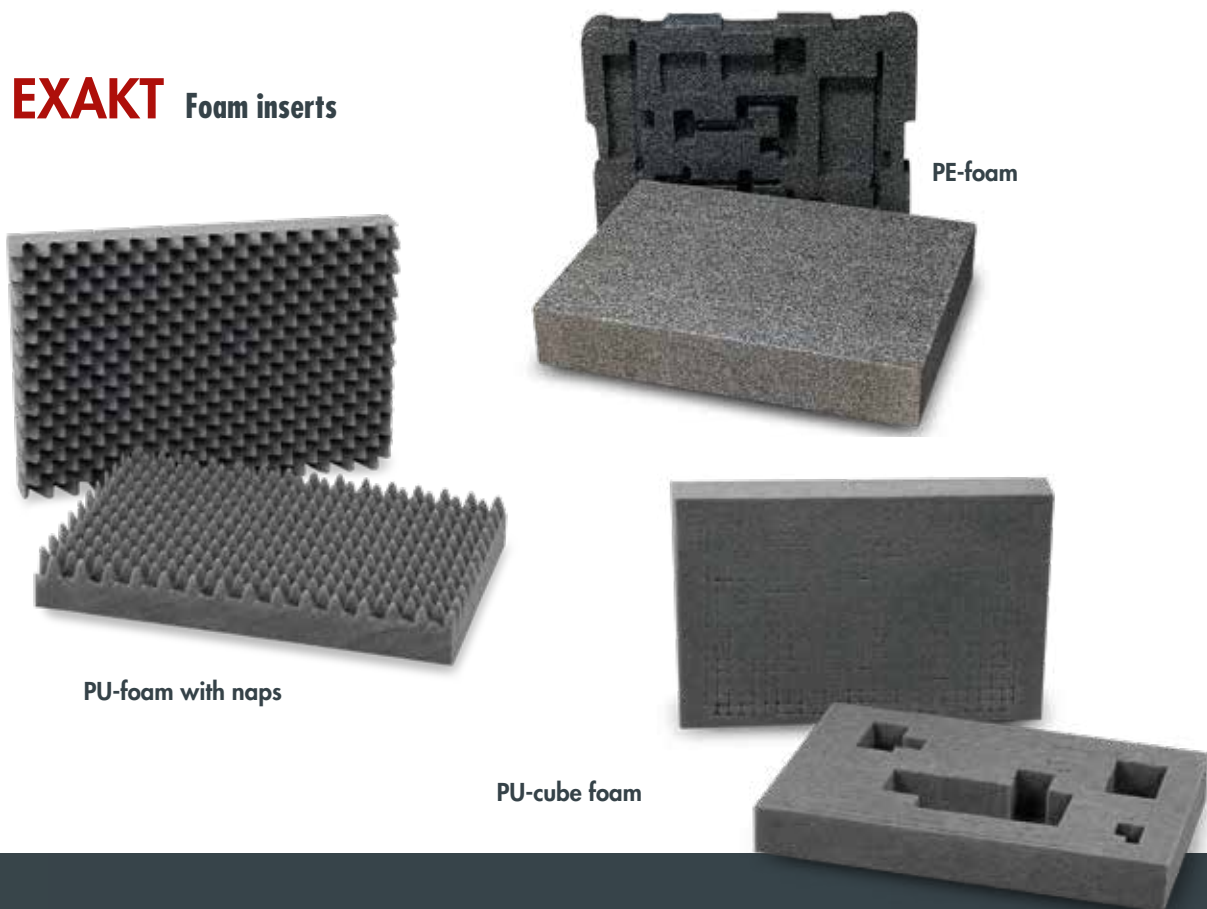
Printing on ABS-shell

3-D-Logos

TOOL CASES Special individual version POLYTEX - Custom-made



EXAKT Foam inserts



BELTS



Item-no. 53 6200 1919

MM Dimensions
460 x 80 x 310

Fittingly tailored PE foam as a block. Especially for the individual making of small series. CNC milled cartridges according to your needs possible.

Item-no. 53 6201 1919

MM Dimensions
470 x 80 x 360

KG Weight

Item-no. 53 6202 1919

MM Dimensions
460 x 60 x 310

PU foam with naps. Fittingly tailored as an inlay. Appropriate for the easy Fixing of products.

Item-no. 53 6203 1919

MM Dimensions
470 x 60

MM Inner dimension

Item-no. 53 6206 1919

MM Dimensions
460 x 50 x 310

PU cube foam - the foam blocks can be unhinged easily for the Fixing of sensitive goods like laptops, mobile phones, measuring instruments etc. For tool cases without bottom-tray or as an inlay for the bottom-tray of XL cases.

Item-no. 53 6207 1919

MM Dimensions
470 x 50

KG Volume

Item-no. 53 6208 1919

MM Dimensions
430 x 50 x 290

KG Weight

Item-no. 30 7003 1919

Shoulder-belt leather
2 karabines, shoulder-protection

Item-no. 30 7004 1919

Shoulder-belt leather
without shoulder-protection

Item-no. 30 7000 1919

Shoulder-belt Nylon
2 karabines
shoulder-protection
adjustable Lenght

Item-no. 30 7006 1919

Weight ring
fixing; must be revised



Item-no. 30 4563 8019

Front side
6 Push-in compartments, 2 Elastic bands, 1 Turnbuckle
Back side
8 Push-in compartments, 2 Elastic bands

Item-no. 30 4565 8019

Front side
13 Push-in compartments, 1 Turnbuckle
Back side
14 Push-in compartments, 6 Elastic bands

Item-no. 30 4566 8019

Front side
5 Push-in compartments, 1 Turnbuckle
Back side
5 Push-in compartments

Item-no. 30 4567 8019

Front side
15 Push-in compartments, 15 Elastic bands
Back side
6 Push-in compartments, 1 Document compartment A4

Item-no. 30 4574 8019

Item-no. 30 4713 8019

Front side
9 Push-in compartments
Back side
11 open Push-in compartments

Item-no. 30 4765 8019

Front side
13 Push-in compartments
Back side
26 Elastic bands

Item-no. 30 4766 8019

Front side
11 Push-in compartments, 6 Elastic bands
Back side
33 Elastic bands



Item-no. 30 4767 8019

Front side
24 Elastic bands
Back side
24 Elastic bands

Item-no. 30 4771 8019

Front side
21 Push-in compartments
Back side
12 Push-in compartments

Item-no. 30 5164 8019

Front side
9 Push-in compartments, Push button-pocket, 10 Elastic bands
Back side
1 Document compartment A4

Item-no. 30 5165 8019

Front side
14 Push-in compartments
Back side
14 Push-in compartments

Item-no. 30 5170 8019

Front side
9 Push-in compartments, Push button-pocket, 10 Elastic bands
Back side
9 Push-in compartments, 18 Elastic bands

Item-no. 30 5180 8019 left

Item-no. 30 5181 8019 right
Document plate DIN A 4 with 6 Push-in compartments
for writing implements, business cards etc.



Item-no. 30 5358 8019

Front side
10 offene Push-in compartments
Back side
15 Push-in compartments

Item-no. 30 5364 8019

Front side
9 Push-in compartments, Push button-pocket
10 Elastic bands
Back side
1 Document compartment A4

Item-no. 30 5365 8019

Front side
13 Push-in compartments
Back side
8 Push-in compartments, 6 Elastic bands

Item-no. 30 5366 8019

Front side
11 Push-in compartments, 6 Elastic bands
Back side
33 Elastic bands

Item-no. 30 5370 8019

Front side
5 Push-in compartments
Back side
5 Push-in compartments

Item-no. 30 5371 8019

Front side
21 Push-in compartments
Back side
12 Push-in compartments

Item-no. 30 5376 8019

Front side
26 Elastic bands
Back side
28 Elastic bands

Item-no. 30 5380 8019 left

Document plate DIN A 4 mit 6 Push-in compartments for writing implements, business cards etc.

Item-no. 30 5381 8019 right

Document plate DIN A 4 with 6 Push-in compartments for writing implements, business cards etc.

BOTTOM TRAYS

for cases 460 x 310 mm

for cases 460 x 310 mm

for cases 470 x 360 mm

View into insert shell
with subdivisions



View into insert shell
with subdivisions



Item-no. 30 5003 8019

Bottom tray with
1 divider lengthwise and
3 dividers crosswise

Item-no. 30 4799 8019

Boxes with compartments for
bottom tray

Item-no. 30 4573 8019

Bottom tray with 1 divider length-
wise and 3 dividers crosswise
Cover plate with 14 Push-in
compartments

Item-no. 30 4762 8019

Bottom tray with 1 divider length-
wise and 3 dividers crosswise
Cover plate with
28 Elastic bands

Item-no. 30 5303 8019

1 divider lengthwise and 3 dividers
crosswise for bottom tray

Item-no. 30 4564 8019 left

Bottom tray with
1 divider lengthwise and
3 dividers crosswise
Cover plate with 9 Push-in
compartments

Item-no. 30 4571 8019 right

Bottom tray with
1 divider lengthwise and
3 dividers crosswise
Cover plate with 6 Push-in com-
partments

Item-no. 30 4575 8019

Bottom tray with 1 divider length-
wise and 3 dividers crosswise
Cover plate with 15 Push-in
compartments

Item-no. 30 4768 8019

Bottom tray with 1 divider length-
wise and 3 dividers crosswise
Cover plate with 11 Push-in
compartments and 5 Elastic bands

Item-no. 30 5359 8019 left

Bottom tray with 1 divider length-
wise and 3 dividers crosswise,
Cover plate with 6 Push-in
compartments

Item-no. 30 5368 8019 right

Bottom tray with 1 divider length-
wise and 3 dividers crosswise,
Cover plate with 11 Push-in com-
partments and 5 Elastic bands

Item-no. 30 4572 8019

Bottom tray with 1 divider length-
wise and 3 dividers crosswise
Cover plate empty

Item-no. 30 5372 8019 left

Bottom tray with 1 divider length-
wise and 3 dividers crosswise
Cover plate empty

Item-no. 30 5375 8019 right

Bottom tray with 1 divider length-
wise and 3 dividers crosswise,
Cover plate with 26 Elastic bands

After Paul Ehrhardt continued to run Becker in the mid-1970s, a new branch of business developed in the 90s - industrial and tool cases. This area still manufactures and sells quality products for retail and end customers. Whether industrial or private customer, Hepco & Becker can respond to the needs of each individual customer and realize special requests.

COMMITTED TO QUALITY.

Due to our own, German production, it is possible to ensure a very high quality standard.

Tool cases must be robust to withstand everyday stress. For this reason, we carry out practical tests, for example that Simulate the impact of objects using different weights. Drop tests at different heights are also carried out regularly. These are carried out in an empty state as well as with various contents from different heights. All products are regularly checked and optimized across processes.

This is the only way to really test resistance and ensure the required quality. This is how our - Made in Germany - tool cases meet the necessary standards in quality and break resistance.

REALIZE CUSTOMER REQUIREMENTS. The selection stands out.

The variety of the range results from different materials such as. Example leather, plastic, aluminum and highly tear-resistant nylon, which can be combined with each other. The entire range is subject to constant updates. We continuously strive to supplement our product range in a meaningful way and to offer a wide selection. This is how we develop products for customers promptly and in a user-friendly manner. Our tool or industrial cases are long-lasting and stable in value - the perfect addition to everyday work.

Since 2017 it has also been possible to order conveniently in our online shop: www.hepco-werkzeugkoffer-shop.de



1. Validity

The provisions listed below shall apply exclusively. Deviating customer provisions shall only be valid if we have issued our explicit agreement in writing.

2. Delivery conditions

All prices are exclusive of the applicable rate of VAT. Goods for export are delivered ex-works, duty unpaid.

3. Payment terms

Generally, payment within 30 days net, as of the invoice date in each case. We reserve the right to deliver to new customers subject to payment in advance.

4. Sample production

All sample deliveries will be invoiced. Custom designs cannot be returned. A credit shall be issued in respect of collection items returned in perfect condition postage-paid.

5. Warranty conditions

The customer must check all goods immediately on receipt and notify us of any defects immediately in writing. We shall repair the defects or deliver replacement goods at our discretion and excluding all further warranty entitlements on the part of the purchaser. Assuming proper treatment, a warranty of 2 years shall apply in respect of defects in materials or workmanship.

6. Reservation of title

The goods shall remain our property until full payment has been made.

7. Place of jurisdiction

German law shall apply exclusively. Place of jurisdiction is Pirmasens

8. Severability clause

Unless otherwise specified in the General Terms and Conditions, the statutory provisions shall apply. The legal invalidity of one part of these General Terms and Conditions shall not affect the validity of the remaining provisions.

9. Copyright

We reserve all property rights and copyrights to all illustrations and other documents. These may not be made available to third parties without our express written consent.

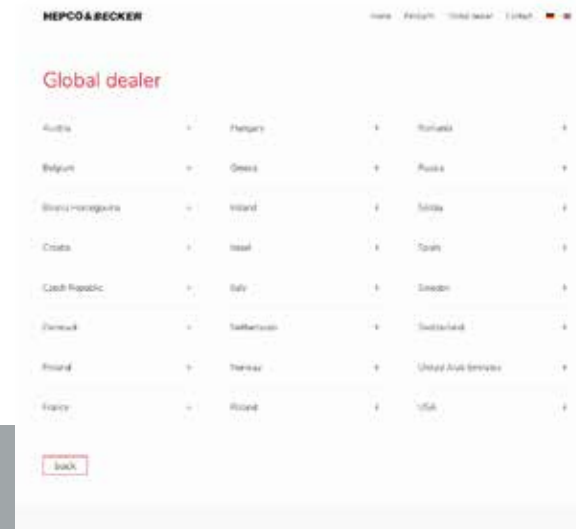
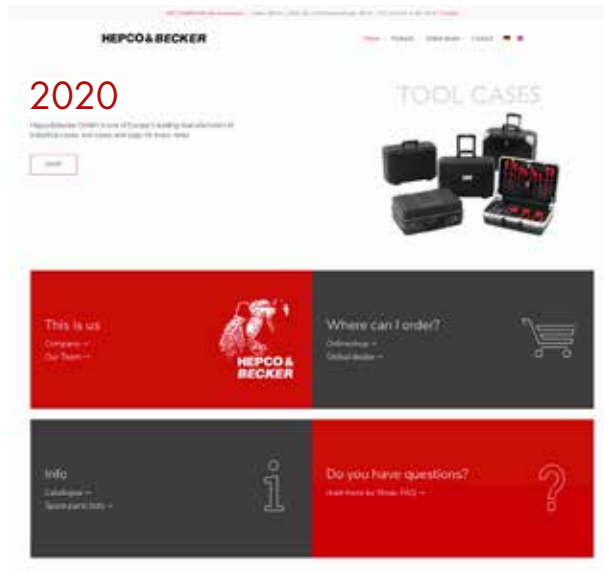
10. Miscellaneous

Delivery without tools. Information regarding technical data, delivery scope, appearance and measurements is correct at the time of publication. We accept no liability for printing errors. Subject to technical changes and modifications. Effective date 02/2020.



YOU CAN FIND MUCH MORE INFORMATION ON OUR WEBSITE, AVAILABLE IN ENGLISH
HERE YOU WILL ALSO FIND A SEARCH OPTION FOR SOURCES OF SUPPLY IN YOUR AREA.

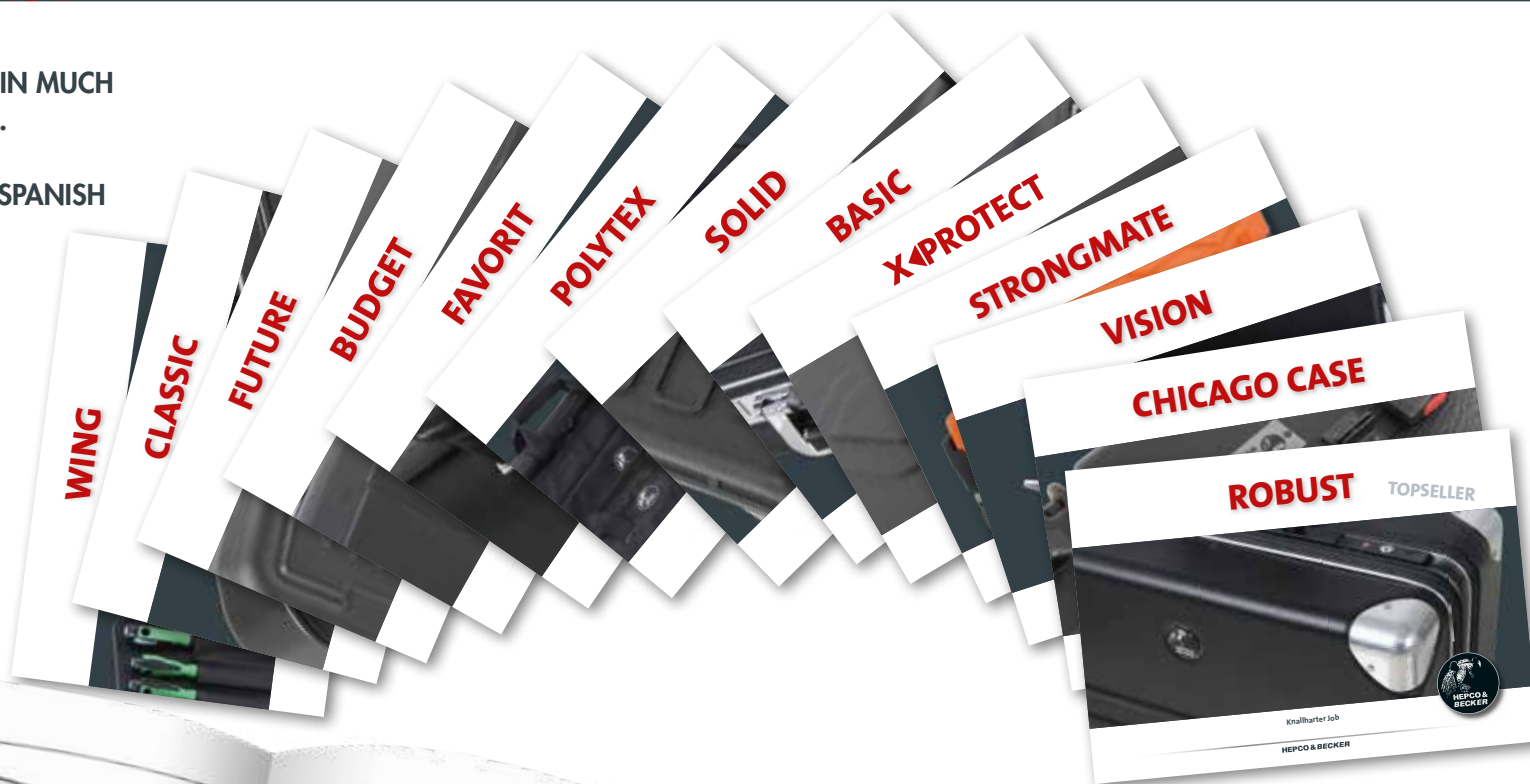
NONE OF THE CASES MEETS YOUR REQUIREMENTS?
THEN WHY NOT PUT TOGETHER YOUR DREAM SUITCASE YOURSELF:
THE CASE CONFIGURATOR ON OUR WEBSITE MAKES IT POSSIBLE,
AVAILABLE IN GERMAN



DIVERSITY AND QUALITY

HEPCO & BECKER

OUR INDIVIDUAL PRODUCT FLYERS CONTAIN MUCH MORE INFORMATION AND ILLUSTRATIONS.
PRINT VERSION AVAILABLE IN GERMAN
PDF AVAILABLE IN ENGLISH, FRENCH AND SPANISH



Order flyer free of charge:

Tel.: +49 (0) 6331 1453 200

Fax: +49 (0) 6331 1453 220

info@hepco-becker.de

or download it directly:

www.hepco-werkzeugkoffer.de

THE HEPCO&BECKER TOOLBOX ASSORTMENT



TOOL CASES FROM HEPACO&BECKER

THE PARKING PLACE FOR YOUR TOOLS

ORDERS, QUESTIONS,
WISHES AND
SUGGESTIONS:

An der Steinmauer 6
D-66955 Pirmasens
Deutschland
+49 (0) 6331 1453 200
info@hepco-becker.de

WWW.HEPCO-WERKZEUGKOFFER.DE

Subject to technical development and modifications. Delivery without tools. We do not assume any liability for printing errors. The technical specifications, scope of delivery, appearance and dimensions correspond to the knowledge available at the time of printing. 02/2020.

 **Klimaneutral**
Druckprodukt
ClimatePartner.com/12755-2002-1245

We have offset all CO2 emissions from print production.